



4 Lawn Terrace, Pontypridd, CF37 1DA

£130,000

**** End Terraced House ** Three Bedrooms ** Walk to School, Shops & Train ****
Offered with no onward chain.

An end terraced house comprising entrance hall, lounge, living room, dining room, kitchenette, bathroom and three bedrooms.

There is a paved garden with small garage.

The property is ideally located for many amenities including University, schools, shops, train station and main roads.

In need of some improvement but offering excellent potential for buyers.

No onward chain.

Entrance Hall

Half glazed entrance door, radiator, coved ceiling, laminated wood flooring, staircase to first floor.

Lounge 11'5" x 9'5" (3.49 x 2.88)



Double glazed window to front, radiator, coved ceiling.

Living Room 12'10" x 11'10" (3.92 x 3.61)



Radiator, coved ceiling, laminated wood flooring, window overlooking kitchenette.

Dining Room 8'11" x 8'3" (2.74 x 2.54)



Radiator, coved ceiling, window overlooking kitchenette.

Kitchenette 8'9" x 6'4" (2.69 x 1.95)



Stainless steel sink unit, base and wall cupboards, electric oven & hob, space for washing machine, double glazed window and door to rear.

Bathroom

Panelled bath with mains shower, wc, wash hand basin, part tiled walls, two radiators, double glazed windows to side and rear.

First Floor Landing

Attic access.

Bedroom 1 15'11" x 8'11" (4.87 x 2.72)



Two double glazed windows to front, radiator.

Bedroom 2 10'1" x 8'6" (3.08 x 2.60)



Double glazed window to rear, radiator.

Bedroom 3 9'9" x 8'10" (2.98 x 2.70)



Double glazed window to rear, radiator.

Outside

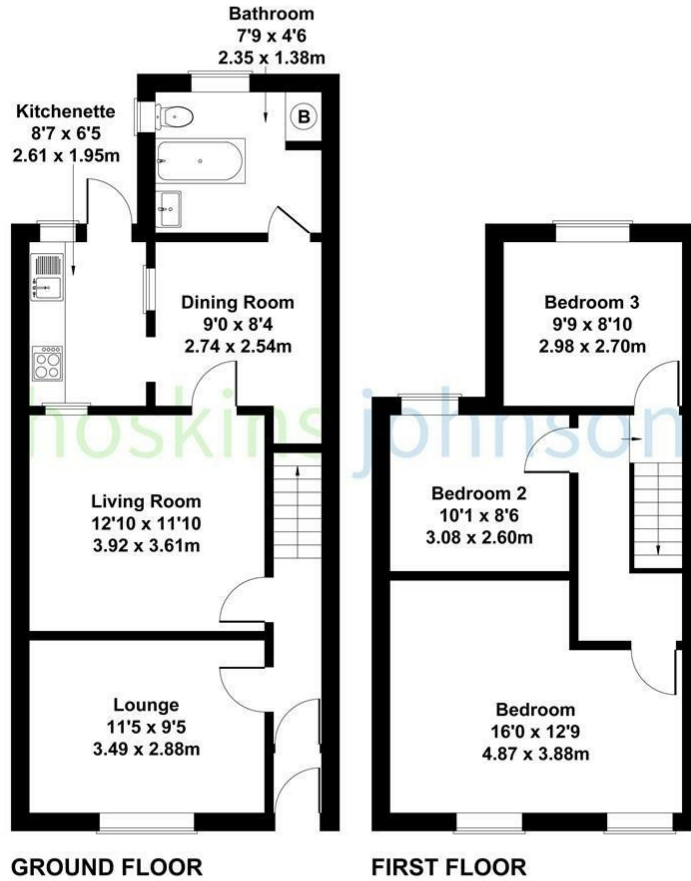


Paved garden with small garage.

Floor Plan

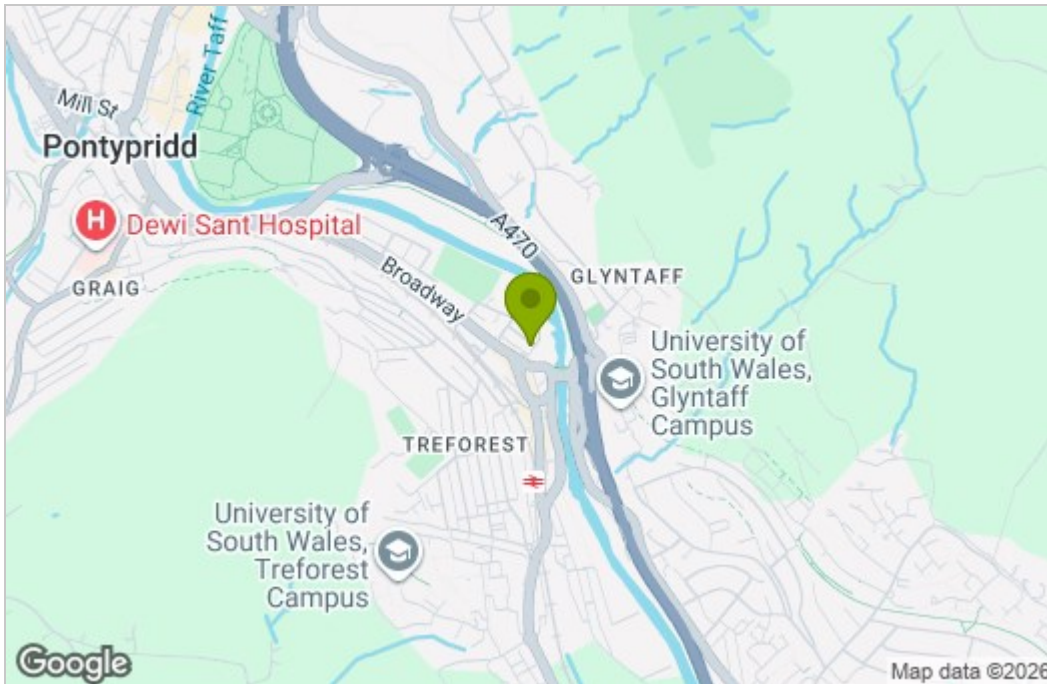
4 Lawn Terrace, Treforest

Approximate Gross Internal Area
1012 sq ft - 94 sq m

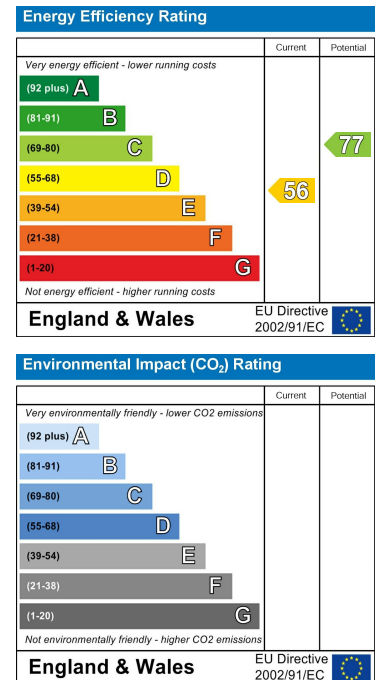


Not to Scale. Produced by The Plan Portal 2026
For Illustrative Purposes Only.

Area Map



Energy Efficiency Graph



These particulars, whilst believed to be accurate are set out as a general outline only for guidance and do not constitute any part of an offer or contract. Intending purchasers should not rely on them as statements of representation of fact, but must satisfy themselves by inspection or otherwise as to their accuracy. No person in this firm's employment has the authority to make or give any representation or warranty in respect of the property.